



Jan Sanjeevni Trust
Hands to Serve - Heart to Love

Reg. No. 1061

PAN No. AADTJ0816E

JAN SANJEEVNI TRUST

Annual Report 2020/2021



9069608049, 9540020246



we@jstngo.org



D-248, balaji complex, Laxmi Nagar, New Delhi-110092



www.jstngo.org



CONTENT

- Introduction
- Mission
- Vision
- Our Belief
- About Us
- Legal Status of the Organization
- Founder's Message
- Our Core Values
- Causes we work for
- Our Program
- Programs Impact
- Proposed Action Plan
- Financial Overview
- Annual General Meeting
- Technical Management
- Financial Management
- Rapport and Liaison of the organization
- Our Trust's Requirements
- Contact Us
- Thank You





Jan Sanjeevni Trust
Hands to Serve - Heart to Love

Reg. No. 1061

PAN No. AADTJ0816E

INTRODUCTION

Jan Sanjeevni Trust embodies a beacon of hope and compassion, dedicated to uplifting the lives of critically ill children and fostering community development in underprivileged areas. Established with a profound commitment to humanitarian service, the Trust operates on the belief that every child deserves access to essential medical care, regardless of economic circumstances. Beyond healthcare, Jan Sanjeevni Trust extends its impact through initiatives focused on education, food security, and women empowerment, recognizing these pillars as essential to building resilient and empowered communities. With unwavering dedication and a holistic approach, the Trust strives to create sustainable change and brighter futures for those in need, embodying the spirit of compassion and social responsibility.



The essence of charity lies not in the act itself, but in the intention to uplift others and alleviate suffering.



MISSION

At Jan Sanjeevni Trust, our mission is to provide critical medical treatment and holistic support to critically ill children from economically disadvantaged backgrounds. We aim to alleviate suffering, save lives, and empower families by ensuring access to quality healthcare services without financial barriers.

VISION

Our vision at Jan Sanjeevni Trust is to build a compassionate society where every child receives the medical care they need to thrive. We envision communities where education is accessible, food security is ensured, and women are empowered, fostering a future where all individuals can reach their full potential.

OUR BELIEF

We believe in the inherent worth and potential of every child. Through compassionate care and community support, we strive to ensure that all children have the opportunity to thrive, regardless of their circumstances.



Jan Sanjeevni Trust

Hands to Serve - Heart to Love

Reg. No. 1061

PAN No. AADTJ0816E

ABOUT US

Jan Sanjeevni Trust is a dedicated nonprofit organization that has stood at the forefront of COVID-19 relief efforts, focusing on providing critical support to vulnerable communities, particularly children and their families. Amidst the global pandemic, we have intensified our efforts to ensure access to essential medical treatment, food security, and educational support for those most in need.

Our COVID-19 relief initiatives have included distributing relief packages containing essential food items to families facing economic hardship. We have also facilitated access to healthcare services, including COVID-19 testing and medical treatment, for underserved communities.

Beyond immediate relief efforts, we have adapted our programs to address the long-term impacts of the pandemic. This includes supporting online education initiatives and empowering women with skills for sustainable livelihoods amidst economic uncertainties.

FOLLOW US



<https://www.facebook.com/JanSanjeevniTrust>



<https://www.youtube.com/channel/UCLLypN5w8UbBP1-X45ovGow>



<https://x.com/SanjeevniJan>



<https://www.instagram.com/jansanjeevnitrust/>



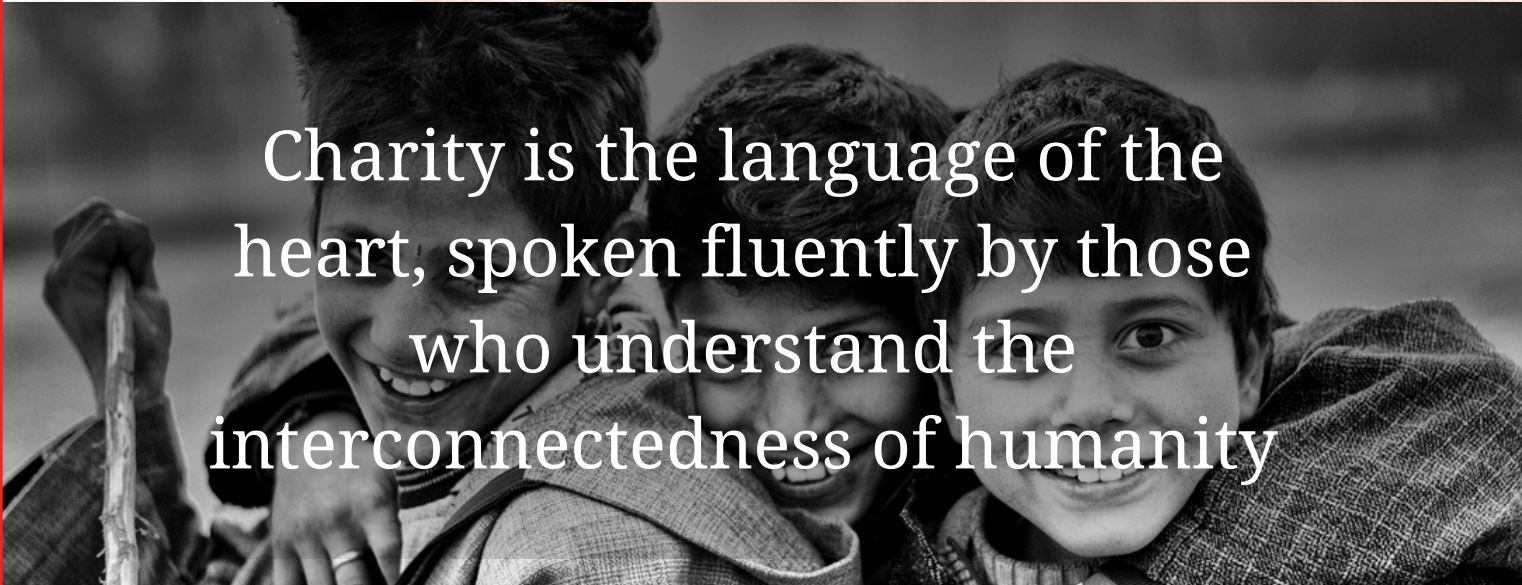
Jan Sanjeevni Trust
Hands to Serve - Heart to Love

Reg. No. 1061

PAN No. AADTJ0816E

LEGAL STATUS OF THE ORGANIZATION

- Trust Registration No. : **IN-DL21443202813902S**
- PAN No. : **AADTJ0816E**
- NGO Darpan Registration: **DL/2019/0237131**
- 80G Registration No. : **AADTJ0816EF20217**
- 12A Registration No. : **AADTJ0816EE20219**
- CSR Registration No.: **CSR00061529**



Charity is the language of the heart, spoken fluently by those who understand the interconnectedness of humanity

MESSAGE FROM THE FOUNDER

Dear Supporters and Friends,

In these challenging times, our commitment to providing critical support to the most vulnerable has never been stronger. The COVID-19 pandemic has tested our resilience, but it has also highlighted the incredible power of compassion and community solidarity.

At Jan Sanjeevni Trust, we have intensified our efforts to ensure that children receive the medical care they need, families have food security, and women are empowered. Your unwavering support has been instrumental in our ability to navigate these times and continue making a difference.

Together, we will emerge stronger and more united, creating a brighter future for all. Thank you for being a part of this journey.

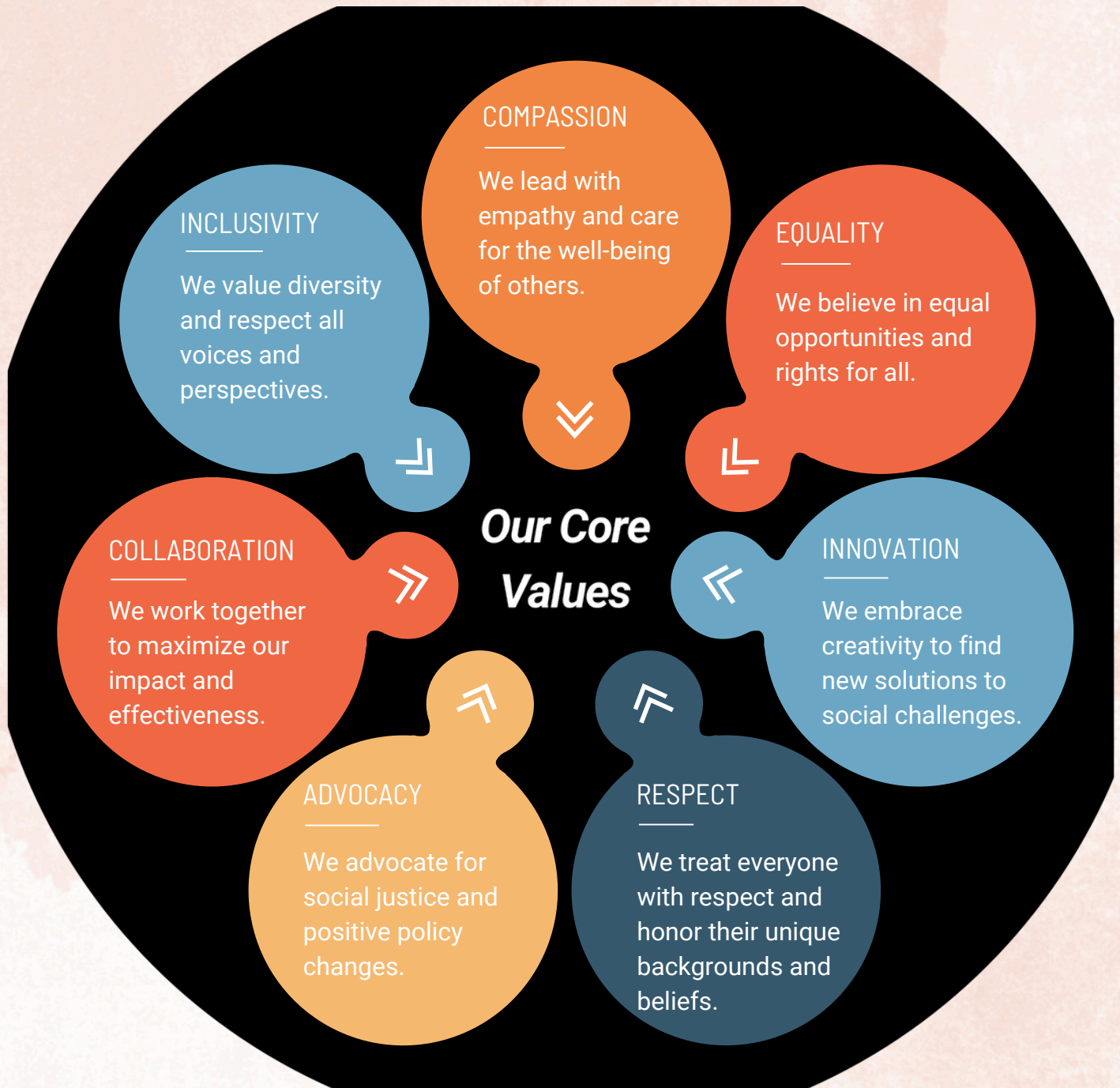
With gratitude,

Rahul Choudhary

Founder



OUR CORE VALUES



These core values are the foundation upon which Jan Sanjeevni Trust stands. They guide our decisions, actions, and interactions, ensuring that we remain true to our mission and continue to make a positive impact on the lives of those we serve.

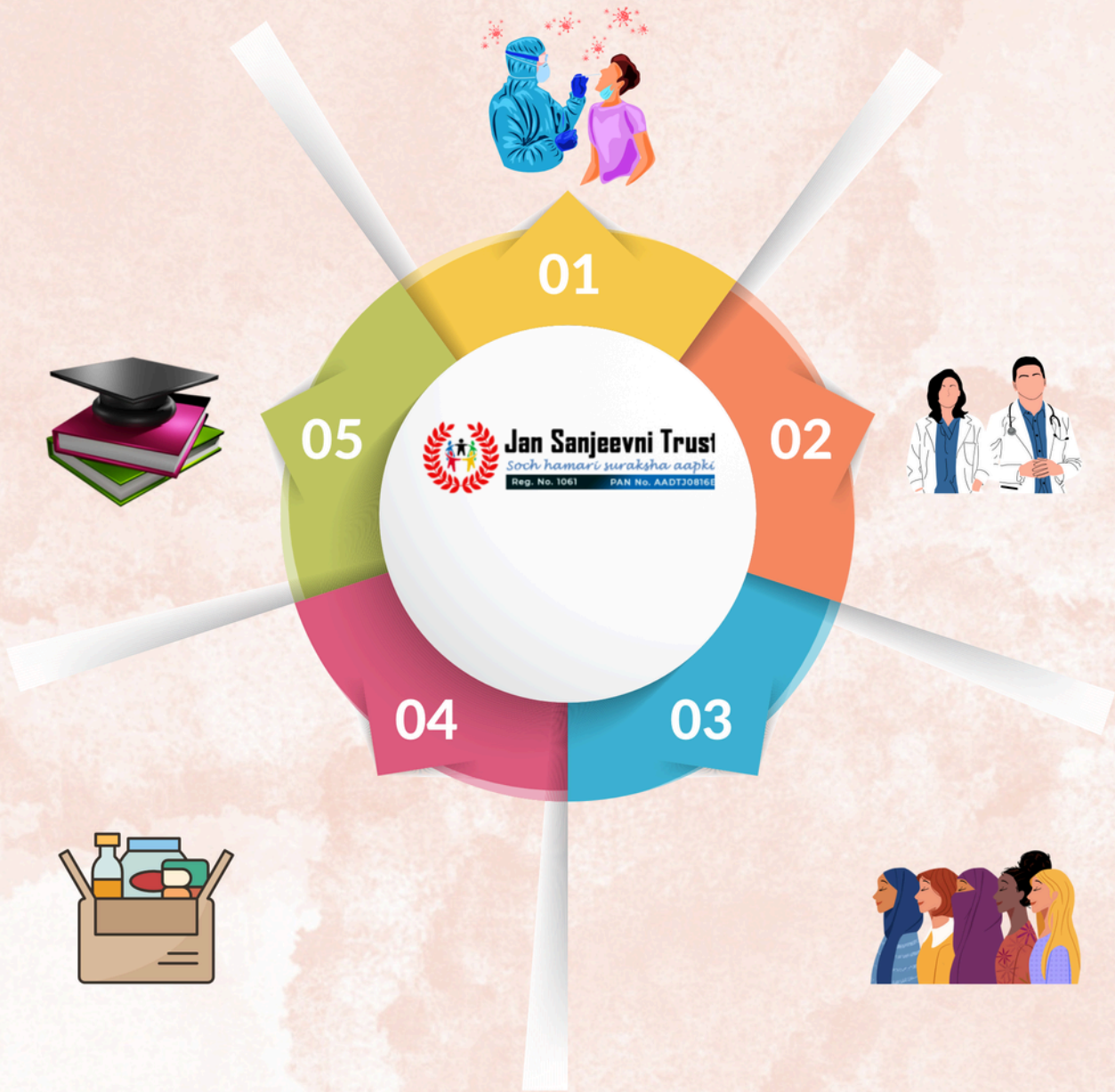


Jan Sanjeevni Trust

Soch hamari suraksha aapki

Reg. No. 1061

PAN No. AADTJ0816E



OUR PROGRAMS

Fight Against Covid -19

In response to the COVID-19 pandemic, Jan Sanjeevni Trust launched several key initiatives to support affected communities:

- **Medical Support:** Facilitated access to COVID-19 testing, treatment, and healthcare services for underserved populations.
- **Food Relief:** Distributed essential food packages to families facing economic hardship due to the pandemic.
- **Educational Support:** Adapted educational programs to online platforms, ensuring continued learning for children.
- **Economic Empowerment:** Conducted skill development workshops to help women and families build sustainable livelihoods amidst the crisis.

Through these efforts, Jan Sanjeevni Trust aimed to mitigate the immediate impacts of the pandemic and foster long-term resilience in the communities we serve.



OUR PROGRAMS

Food Security

During the pandemic, Jan Sanjeevni Trust undertook significant efforts to ensure food security for vulnerable families:

- **Relief Packages:** Distributed essential food packages containing staples and nutritious items to households facing economic hardships.
- **Community Kitchens:** Set up community kitchens to provide hot meals to those in need.
- **Nutritional Support:** Focused on delivering balanced and nutritious food to improve the health and well-being of affected individuals.

These initiatives aimed to alleviate hunger and provide essential nutrition during the challenging times of the COVID-19 pandemic.





Jan Sanjeevni Trust
Hands to Serve - Heart to Love

Reg. No. 1061

PAN No. AADTJ0816E

OUR PROGRAMS

Food Security





Jan Sanjeevni Trust
Hands to Serve - Heart to Love

Reg. No. 1061

PAN No. AADTJ0816E

OUR PROGRAMS

Food Security



OUR PROGRAMS

Helping Poor Children for their Critical Treatment

Jan Sanjeevni Trust is dedicated to providing critical medical care to children from financially disadvantaged families. By covering the costs of surgeries, therapies, and medications, and partnering with hospitals and healthcare providers, the Trust ensures that these children receive timely and quality treatment. Additionally, Jan Sanjeevni Trust offers comprehensive support, including post-treatment care, to ensure the complete recovery of each child, thereby alleviating the financial burden on their families and giving these young patients a chance at a healthier future.

Few Cases



Name : Sakshi Pandey

Age: 4 Years

Suffering : Blood Cancer

OUR PROGRAMS

Helping Poor Children for their Critical Treatment



Name : Yash Rathore

Age: 5 Years

Suffering : Eye Cancer



Name : Shivank

Age: 5 Years

**Suffering : Retinal
Blastoma**



Jan Sanjeevni Trust
Hands to Serve - Heart to Love

Reg. No. 1061

PAN No. AADTJ0816E

OUR PROGRAMS

Helping Poor Children for their Critical Treatment



Name : Faiza

Age: 2.5 Years

Suffering : Eye Cancer



Name : Bhumika

Age: 3 Years

Suffering : Eye Cancer



Jan Sanjeevni Trust
Hands to Serve - Heart to Love

Reg. No. 1061

PAN No. AADTJ0816E

OUR PROGRAMS

Helping Poor Children for their Critical Treatment



Name : Adarsh

Age: 3 Years

Suffering : Eye Cancer



In the year 2020-21, Jan Sanjeevni Trust provided medical treatment assistance to Above beneficiaries, ensuring access to essential healthcare services and improving the quality of life for those in need.

OUR PROGRAMS

Education

In 2020-21, Jan Sanjeevni Trust made significant efforts to support education during the pandemic:

- **Online Learning:** Facilitated online education by providing resources and access to digital learning platforms for students.
-
- **Educational Materials:** Distributed study materials, books, and other essential resources to ensure uninterrupted learning.

These initiatives helped ensure that children could continue their education despite the challenges posed by the pandemic.





Jan Sanjeevni Trust
Hands to Serve - Heart to Love

Reg. No. 1061

PAN No. AADTJ0816E

OUR PROGRAMS

Women Empowerment

In 2020-21, Jan Sanjeevni Trust focused on empowering women through:

- **Economic Support:** Provided resources and training for women to start small businesses and gain financial independence.
- **Education:** Offered educational programs and literacy classes to improve knowledge and opportunities.

These efforts aimed to foster economic independence and social empowerment for women, creating a foundation for long-term success and equality.





PROGRAMS IMPACT

OBJECTIVE

	ACTIVITY	OUTCOME
<p>10 +</p> <p>1000+</p> <p>100 +</p> <p>VOLUNTEERS INVOLVED</p>	<p>Fight Against COVID-19</p> <p>The primary objective of Jan Sanjeevni Trust's Fight Against COVID-19 program was to provide critical support to vulnerable communities affected by the pandemic, ensuring access to healthcare, food security, and educational continuity.</p>	<p>Healthcare: Facilitated COVID-19 testing and treatment, benefiting thousands of individuals.</p> <p>Food Security: Distributed essential food packages to over 10,000 families, alleviating hunger.</p> <p>Education: Enabled online learning for hundreds of students, ensuring uninterrupted education.</p> <p>Economic Support: Empowered women with skills training and resources for sustainable livelihoods.</p>
	<p>Medical Treatment Help Program</p> <p>To provide critical medical treatment to children from economically disadvantaged backgrounds, ensuring they receive the necessary healthcare to overcome serious illnesses and improve their quality of life.</p>	<p>In 2020-21, Jan Sanjeevni Trust successfully facilitated medical treatment for numerous critically ill children, covering costs for surgeries, therapies, and medications. This support not only saved lives but also alleviated the financial burden on families, allowing children to recover and thrive.</p>



PROGRAMS IMPACT

	ACTIVITY	OBJECTIVE	OUTCOME
10 + 1000+ 100 + VOLUNTEERS INVOLVED	Food Security Program	To ensure that vulnerable families have consistent access to nutritious food, especially during times of crisis, thereby alleviating hunger and improving overall health and well-being.	<ul style="list-style-type: none">• Hunger Alleviation: Provided essential food packages and hot meals to families in need, reducing food insecurity.• Nutritional Improvement: Ensured balanced and nutritious diets, enhancing the health and resilience of individuals.• Community Support: Strengthened community bonds and support systems through coordinated relief efforts.
	Education Program	To provide underprivileged children with access to quality education and learning resources, ensuring their academic growth and skill development.	<ul style="list-style-type: none">• Increased Enrollment: More children enrolled in school and educational programs.• Improved Academic Performance: Notable improvements in students' academic achievements and literacy rates.• Skill Development: Enhanced skills and knowledge among students, preparing them for future opportunities.



PROGRAMS IMPACT

OBJECTIVE

	ACTIVITY	OBJECTIVE	OUTCOME
10 + 1000+ 100 + VOLUNTEERS INVOLVED	Women Empowerment	To empower women by enhancing their vocational skills, promoting entrepreneurship, and providing educational opportunities, thereby fostering economic independence and social equality.	<ul style="list-style-type: none">• Skill Enhancement: Women gained new vocational skills, increasing their employability and income potential.• Economic Independence: Many women started their own small businesses, achieving financial stability.• Educational Advancement: Improved literacy and knowledge, leading to greater opportunities and self-confidence.





PROPOSED ACTION PLAN

01

Education Initiatives

Expand educational programs, including scholarships, school support, and vocational training, to empower underserved communities.



02

Healthcare Outreach

Enhance healthcare access through medical camps, vaccination drives, and support for critical medical treatments.



03

Skill Development

Expand skill training centers, with a focus on women and marginalized groups, to improve employability and economic independence.

04

Health and Sanitation

Implement hygiene and sanitation projects to improve overall community health.

05

Fundraising and Outreach

Strengthen fundraising initiatives and partnerships to expand the foundation's impact and reach more beneficiaries.





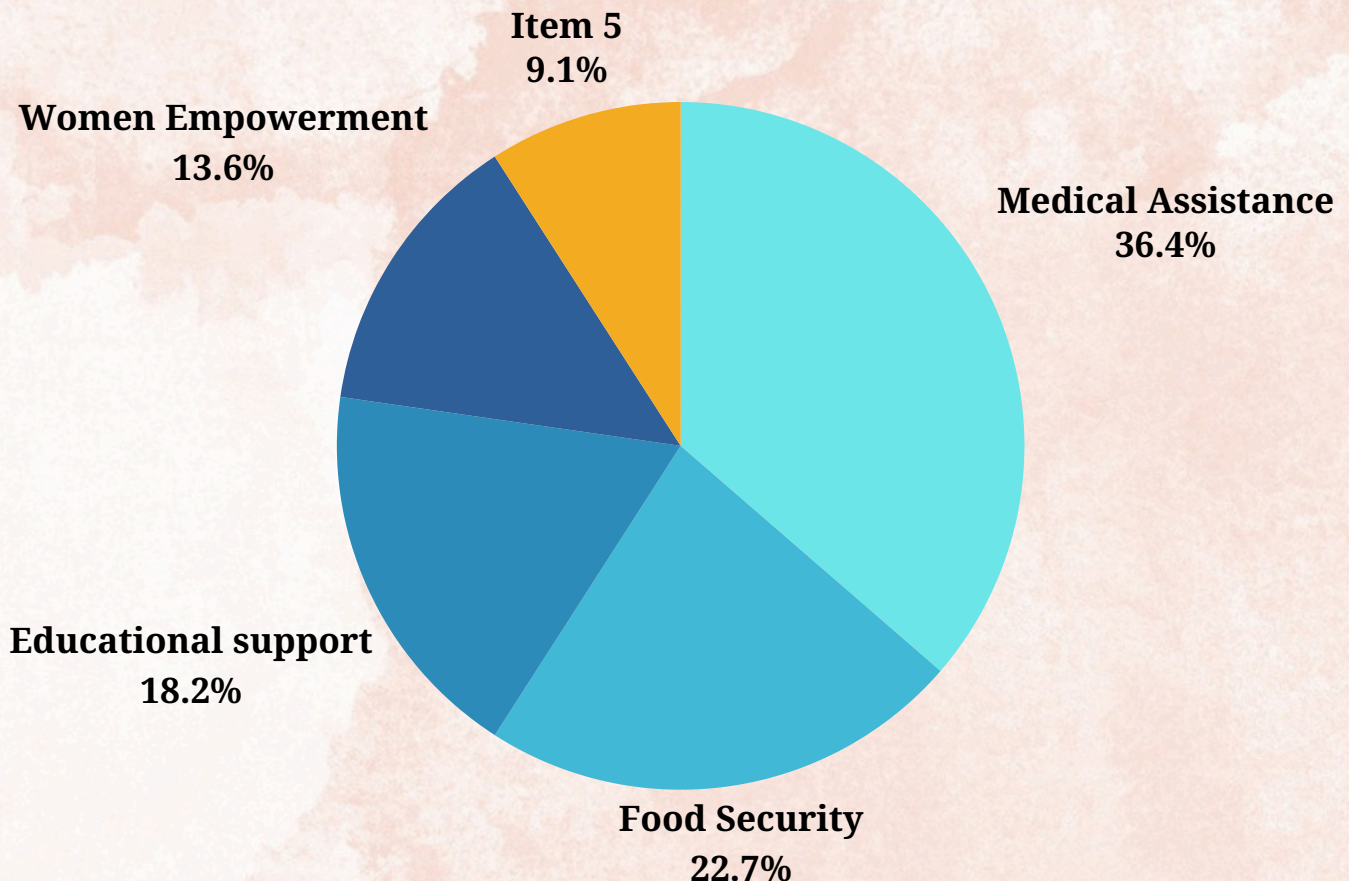
FINANCIAL OVERVIEW

In the fiscal year 2020-21, Jan Sanjeevni Trust managed its finances with transparency and responsibility, ensuring optimal utilization of funds to support its mission.

Income Sources:

- **Donations:** Contributions from individual donors, corporate sponsors, and philanthropic organizations formed the backbone of our funding.
- **Grants:** Secured grants from various foundations and institutions supported our specific projects and initiatives.

Expenditure Breakdown:





FINANCIAL OVERVIEW

Expenditure Breakdown:

- **Medical Assistance (40%):** Covered costs of treatments, surgeries, medications, and follow-up care for critically ill children.
- **Food Security (25%):** Funded the distribution of essential food packages and the operation of community kitchens during the pandemic.
- **Educational Support (20%):** Provided scholarships, educational materials, and support for online learning.
- **Women Empowerment (15%):** Allocated for skill development workshops, small business support, and educational programs for women.

Financial Prudence:

Jan Sanjeevni Trust maintained stringent financial controls and conducted regular audits to ensure accountability and transparency. This prudent financial management enabled us to maximize our impact and sustain our operations effectively.





Jan Sanjeevni Trust
Hands to Serve - Heart to Love

Reg. No. 1061

PAN No. AADTJ0816E

FINANCIAL OVERVIEW

Balance Sheet

JAN SANJEEVNI TRUST
K-606, F/F, KH NO- 779, GALI NO-3
LAXMI BAI MARG, GAUTAM VIHAR YAMUNA VIHAR, DELHI - 110053
STATEMENT OF AFFAIRS AS ON 31ST JANUARY, 2021

LIABILITIES	AMOUNT	ASSETS	AMOUNT
CAPITAL FUND		FIXED ASSETS	-
OPENING BALANCE	3,000		
ADD: SURPLUS	-		
LESS: UTILISED	3,000		
CURRENT LIABILITIES		CURRENT ASSETS	
SALARY PAYABLE	33,337	ICICI BANK	17,671
		STANDARD CHARTERED	18,666
	36,337		36,337

For **CHINTAN KUMAR & ASSOCIATES**
Chartered Accountants
FRN. : 031526N

(CHINTAN KUMAR)
PROPRIETOR
M.N. : 523670
UDIN - 22523670ABMBLN5780
Date : 11/02/2022
Place : New Delhi

JAN SANJEEVNI TRUST

RAHUL CHOUDHARY
TRUSTEE



Jan Sanjeevni Trust
Hands to Serve - Heart to Love

Reg. No. 1061

PAN No. AADTJ0816E

FINANCIAL OVERVIEW

Income & Expenditure Account

JAN SANJEEVNI TRUST
K-606, F/F, KH NO- 779, GALI NO-3
LAXMI BAI MARG, GAUTAM VIHAR YAMUNA VIHAR, DELHI - 110053
INCOME AND EXPENDITURE ACCOUNT
FOR THE PERIOD ENDED 31ST MARCH, 2021

EXPENDITURE	AMOUNT	INCOME	AMOUNT
RELIEF OF THE POOR	9,16,120	DONATION RECEIVED	48,36,794
DISTRIBUTION OF FOOD	35,56,550		
BANK CHARGES	238		
SALARY	2,42,959		
PROFESSIONAL FEE	29,000		
RENT	52,928		
WEBSITE MAINTENANCE	38,999		
EXCESS OF INCOME OVER EXPENDITURE	-		
	48,36,794		48,36,794

For **CHINTAN KUMAR & ASSOCIATES**
Chartered Accountants
FRN. : 031526N

JAN SANJEEVNI TRUST

CHINTAN KUMAR
PROPRIETOR
M.N. : 523670
UDIN - 22523670ABMBLN5780
Date : 11/02/2022
Place : New Delhi

RAHUL CHOUDHARY
TRUSTEE



Jan Sanjeevni Trust
Hands to Serve - Heart to Love

Reg. No. 1061

PAN No. AADTJ0816E

FINANCIAL OVERVIEW

Receipts & Payment Account

JAN SANJEEVNI TRUST
K-606, F/F, KH NO- 779, GALI NO-3
LAXMI BAI MARG, GAUTAM VIHAR YAMUNA VIHAR, DELHI - 110053
RECEIPTS & PAYMENTS ACCOUNT
FOR THE PERIOD ENDED 31ST MARCH, 2021

RECEIPTS	AMOUNT	PAYMENTS	AMOUNT
<u>OPENING BAL</u>		RELIEF OF THE POOR	9,16,120
ICICI BANK	35,034	DISTRIBUTION OF FOOD	35,56,550
CASH IN HAND	850		
<u>INDIRECT INCOME</u>			
<u>DONATION RECEIVED</u>	48,36,794	<u>INDIRECT EXP</u>	
		BANK CHARGES	238
		SALARY	2,42,506
		PROFESSIONAL FEE	29,000
		RENT	52,928
		WEBSITE MAINTENANCE	38,999
		<u>BANK BALANCE</u>	
		ICICI BANK	17,671
		STANDARD CHARTERED	18,666
	48,72,678		48,72,678

For **CHINTAN KUMAR & ASSOCIATES**
Chartered Accountants
FRN. : 031526N

JAN SANJEEVNI TRUST

(**CHINTAN KUMAR**)
PROPRIETOR
M.N. : 523670
UDIN - 22523670ABMBLN5780
Date : 11/02/2022
Place : New Delhi

RAHUL CHOUDHARY
TRUSTEE



ANNUAL GENERAL MEETING

The Annual General Meeting (AGM) of Jan Sanjeevni Trust for the fiscal year 2020-21 was held on 21-3-2021, bringing together trustees, stakeholders, donors, and community representatives. The meeting provided a platform to review the year's achievements, discuss financial performance, and outline future strategies.

Agenda Highlights

Opening Address:

- The meeting commenced with a welcome address by our Founder, Rahul Choudhary, who expressed gratitude to all supporters and highlighted the Trust's dedication to its mission during the challenging pandemic year.

Review of Activities:

- A comprehensive review of the Trust's activities was presented, detailing efforts in medical assistance, food security, education, and women empowerment. Success stories and testimonials from beneficiaries were shared, underscoring the impact of our programs.

Financial Overview:

- The Treasurer presented the financial report for 2020-21, including income sources, expenditure breakdown, and audited financial statements. Emphasis was placed on the effective and transparent use of funds to maximize impact.

ANNUAL GENERAL MEETING

COVID-19 Relief Efforts:

- Special focus was given to the Trust's COVID-19 relief initiatives, highlighting the distribution of food packages, medical support, and adaptations to educational programs.

Future Plans:

- Plans for the upcoming year were discussed, including expanding medical assistance programs, enhancing educational initiatives, and launching new women empowerment projects. Strategies for
- increasing fundraising efforts and strengthening community partnerships were outlined.

Q&A Session:

- Attendees had the opportunity to ask questions, provide feedback, and suggest ideas for future initiatives.
- The interactive session fostered transparency and community engagement.

Closing Remarks:

- The meeting concluded with closing remarks from the Board of Trustees, reaffirming their commitment to the Trust's mission and expressing optimism for the future.



TECHNICAL MANAGEMENT

The management information system in the organization keeps the board of members informed about all financial and program implementation activities in the organization. Regular monthly meetings are conducted with the concerned project/office staff for reviewing the program activities. Detailed deliberations are conducted in the meetings and decisions are arrived at after reaching a consensus on major issues. Reporting relationship is also maintained both upwards and downwards with regular flow of information. The board also reviews the work of the organization and gives necessary direction based on feedbacks from the field.

FINANCIAL MANAGEMENT

As far as financial management is concerned, the organization is guided by transparency in operations. A monthly financial statement is prepared to monitor the financial status of each project. All the accounts (Cashbook and ledgers) are maintained on daily basis. For different projects, separate books of accounts, records are maintained and the same are audited by an external auditor. Periodical reports are generated for MIS purpose and submitted to project sanctioning authorities as per guidelines.



RAPPORT AND LIAISON OF THE ORGANIZATION

The organization maintains good rapport and liaison with various government departments at all levels. It also continues to maintain good liaison with all the funding organization that have supported the organizations not only in the past but also under the ongoing program. Further at the grass root level also close coordination is maintained with PRIs, CBOs, social activists, community leaders etc.





Jan Sanjeevni Trust
Hands to Serve - Heart to Love

Reg. No. 1061

PAN No. AADTJ0816E

OUR TRUST'S REQUIREMENTS

Volunteer

Jan Sanjeevni Trust relies on dedicated volunteers who contribute their time, skills, and passion to support various social welfare initiatives, fostering a sense of community and shared responsibility.

Volunteers play a crucial role in the trust's mission, helping to extend its reach and positively impact the lives of those in need.

Fundraising

Funds are crucial for designing, implementing, and expanding various social programs, including education, healthcare, and community development initiatives.

Financial resources are required to engage with and support marginalized communities, which often entails organizing awareness campaigns and outreach efforts.

Recognition

Recognition is important for Jan Sanjeevni Trust to acknowledge the outstanding contributions of its volunteers, donors, and partners, fostering a culture of appreciation and motivation within the organization.

Public recognition also helps in building trust and credibility, attracting more support and resources for the foundation's social welfare endeavors.



Jan Sanjeevni Trust
Hands to Serve - Heart to Love

Reg. No. 1061

PAN No. AADTJ0816E

CONTACT US



9069608049, 9540020246



we@jstngo.org



D-248, balaji complex, Laxmi Nagar, New
Delhi-110092



www.jstngo.org

T H A N K
Y O U



9069608049, 9540020246



we@jstngo.org